

# Assembly Guide PPSWAV

**1.** Mark hole positions on wall, then drill to manufacturers specified diameter and depth of M8 rawl bolt (See Wall Fix installation sheet)

**2.** Once holes are drilled insert M8 rawl bolts into holes and set in place to secure tightly.

**3.** Attach instrument to rawl bolts or other suitable wall anchors (**not supplied**) making sure they are tight to the wall.

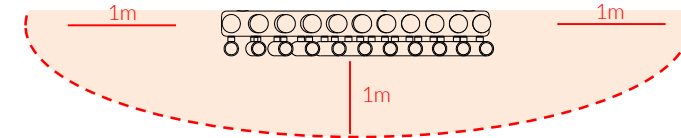
Tools:



x1 TX 40 Driver Bit      x1 TX 25 Driver Bit

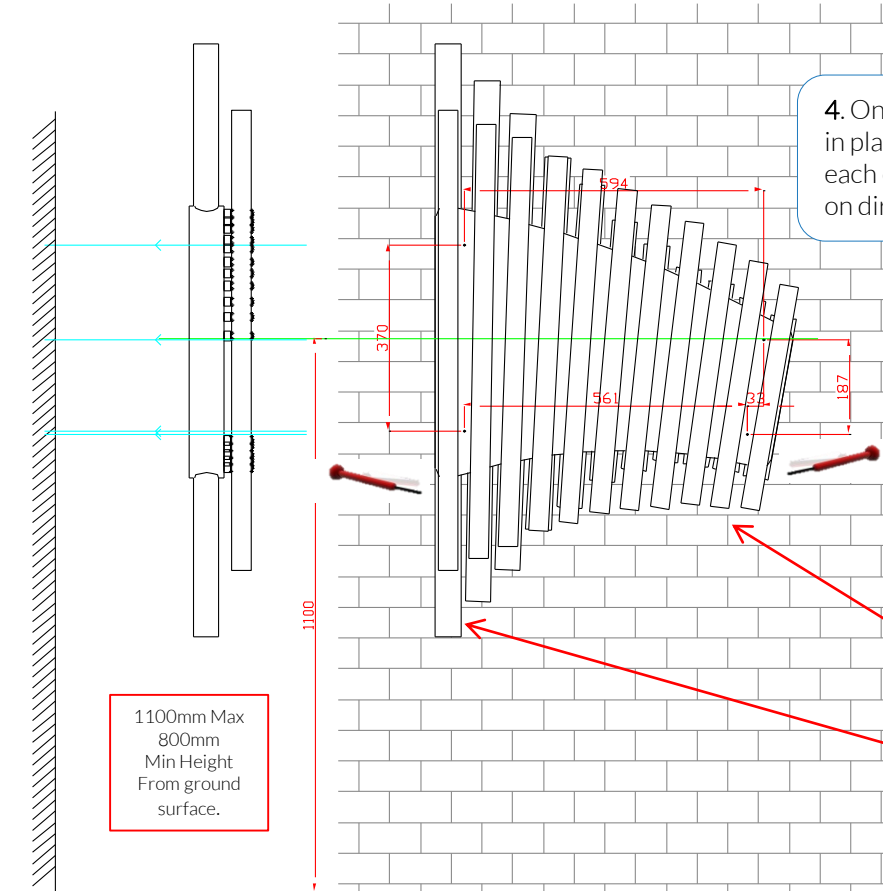
## Wall Fixed

Cherub  
Page 1 of 1



Install Instrument with 1m free space (from widest point) around it.

**4.** Once all mounts are fixed in place attach the beaters at each end of the instrument on directly to the wall.



## Components:

-  x2
-  x4

Thread Lock Solution Required (Not Supplied)



Pair Small Beaters X1

Wall fixings are not supplied, installer will select suitable method of fixing. Suggested Fixing M8 Rawl Bolt



Spares available from [percussionplay.com](http://percussionplay.com) or from your local distributor

32 Kg